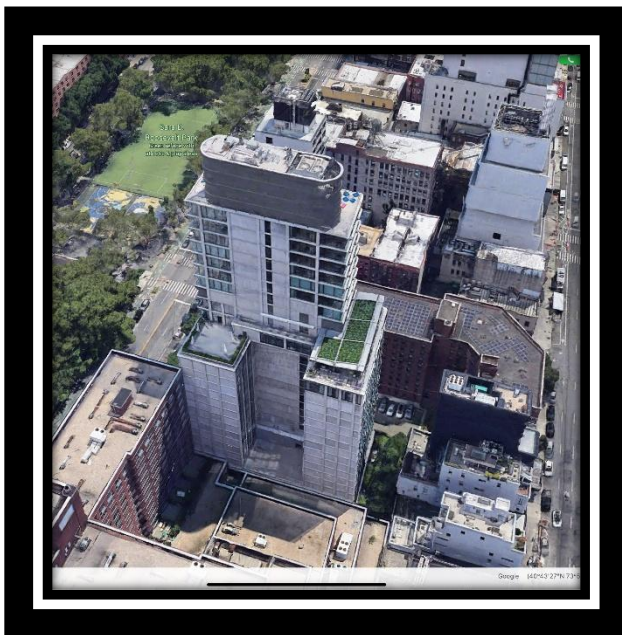


# Reference Profile





CCM Roofing  
105 Bloomingdale Road  
Hicksville, NY 11801

To Whom It May Concern,

Thank you for considering CCM Roofing to be among the selected contractors entrusted as part of your team on your upcoming project. For over 20 years CCM Roofing has been producing commercial roofing and waterproofing projects throughout the New York metro area.

CCM Roofing is a certified installer of all major roofing manufacturers including Siplast, Carlisle, Versico, John's Manville, Soprema, GAF, Elevate, and Kemper.

The information within this profile is intended to help you determine the capabilities of CCM Roofing and how we can be an asset to your organization in many ways.

Thank you for considering CCM Roofing to be part of your team. Feel free to reach out to us with any questions you may have.

Sincerely,

Warren Pavon  
President  
CCM Roofing

## SURFACE DESIGN

40 Worth Street, #814  
New York, NY 10013

October 2, 2024

To Whom It May Concern,

I am writing in reference to and support of the professionalism of Warren Pavon & CCM Roofing. We have gained experience together on a commercial roofing restoration project recently completed at 520 Madison Avenue in Manhattan, NY. The result of this project has been satisfactory for our office and mutual client.

Over the course of our working relationship, CCM Roofing has provided responsive communication, timely adjustments to requested corrections, and offered helpful solutions to issues encountered during the project.

I hope that you will strongly consider CCM Roofing for your project's needs.

Best Regards,

Jordan Smith



Field Inspector

AJLP | Surface Design Group

40 Worth Street, #814, New York, NY 10013

T: 212.757.5659

E: [jordans@ajlpconsulting.com](mailto:jordans@ajlpconsulting.com) | [www.surfacedg.com](http://www.surfacedg.com) | [www.ajlpconsulting.com](http://www.ajlpconsulting.com)

40 Worth Street #814, New York, NY 10013 T/ 212.757.5659

**ALDENGroup**  
www.aldengroup.us 

60 Carleton Avenue, Islip Terrace, NY 11752  
construction.managers.consultants.feasibility.compliance

p631.589.5509  
f631.589.5506

September 19, 2024

**General Reference- CCM Roofing**

Division(s) of Work

Roofing: Flat & Shingle  
Waterproofing (Above grade)  
Siding(s) Multiple Grades and Variations  
Misc light gauge metals, carpentry.

To whom it may concern,

Be advised that Alden Group, Ltd is a (CMA) Construction Management and Consulting firm based in Long Island, NY. AG's specific discipline(s) primarily covers emergency services in the public works market and heavy industrial and infrastructure design, management, administration on private market development projects. Alden Groups' projects typically range from \$10m-\$30m per project.

CCM Roofing has successfully performed the above noted divisions of work on multiple projects over the past 12-15 years under our direct supervision in the private-sector or as a sub-contractor to a Prime Contract in the public-sector.

CCM is and has been a continued building envelope resource with ethical business practices, quality workmanship, and whose office provides competency within administration, project management, and organization.



Wayne Alden  
President  
m631.291.5928

**ALDENGroup**  
www.aldengroup.us 



municipal.industrial.commercial.emergency services



## Avalon Midtown West

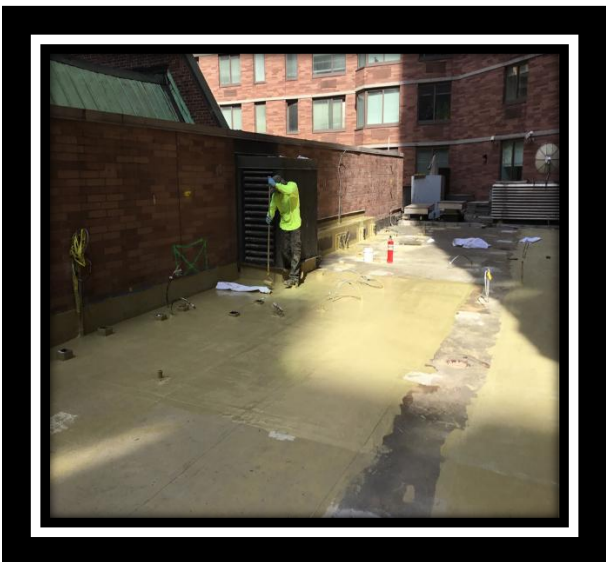
250 W. 50<sup>th</sup> Street  
New York, NY



**Concrete substrate was grinded to expose open concrete pours.  
New epoxy primer was applied**



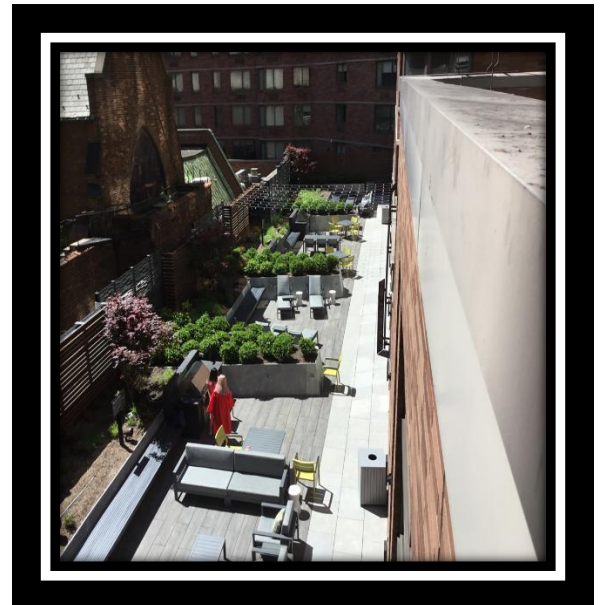
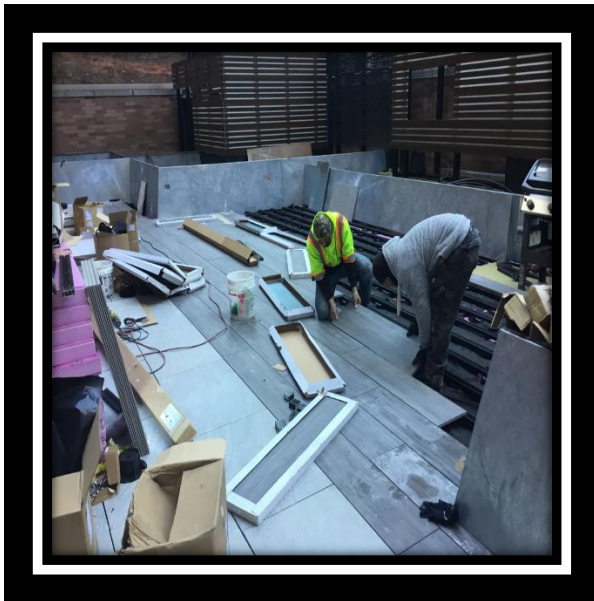
**New liquid resin and fleece membrane waterproofing was applied**



**New planters and media were installed**

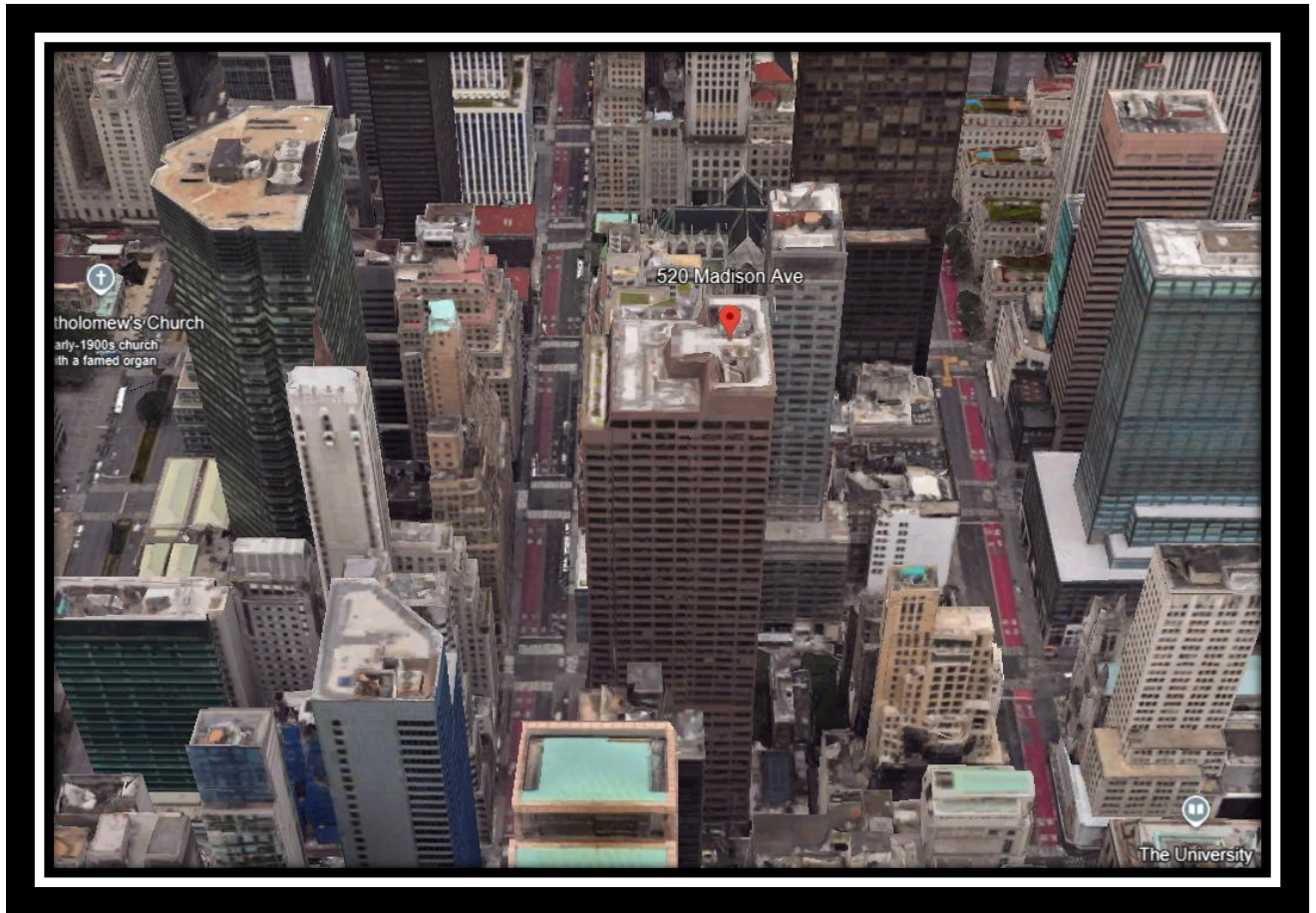


**New interlocking paver system installed**



## 520 Madison Avenue

520 Madison Avenue  
New York, NY



**CCM Roofing**  
Of Long Island Inc.



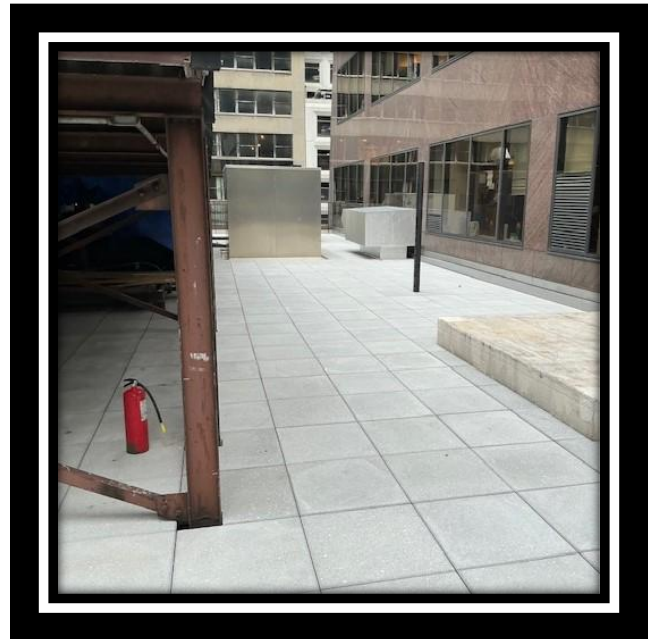
# CCM Roofing Of Long Island Inc.





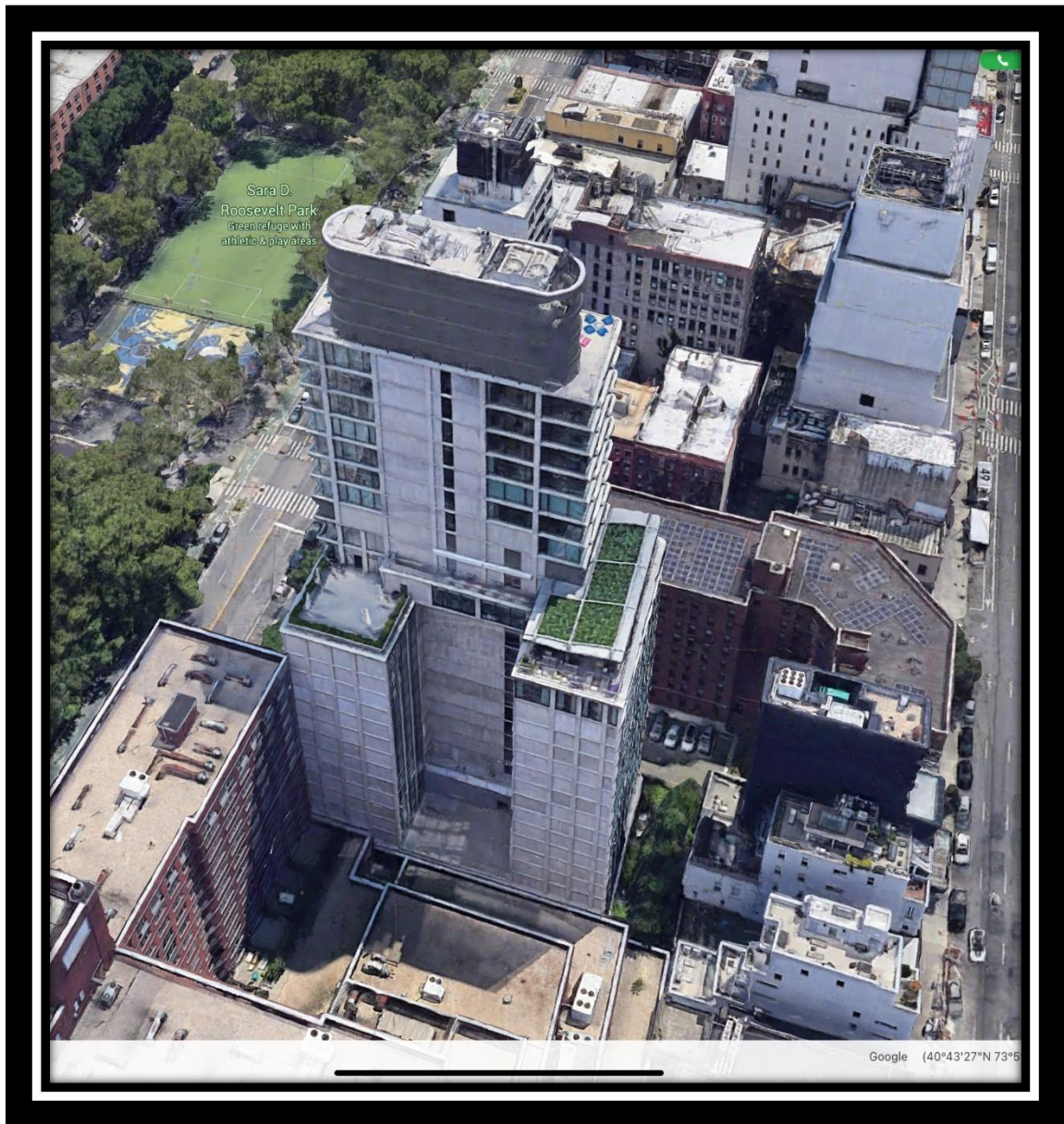
# CCM Roofing Of Long Island Inc.

---



## Public Hotel

215 Chrystie St, New York, NY 10002



**CCM Roofing**  
Of Long Island Inc.



**CCM Roofing**  
Of Long Island Inc.



## Melville Associates

1770 Walt Whitman Road  
Melville, NY



The existing roof layers as well as all the steel substrate were removed and replaced



The new steel deck was fastened and new R-30 insulation was installed





---

The new TPO roof membrane was installed to manufacturers 20 year specifications

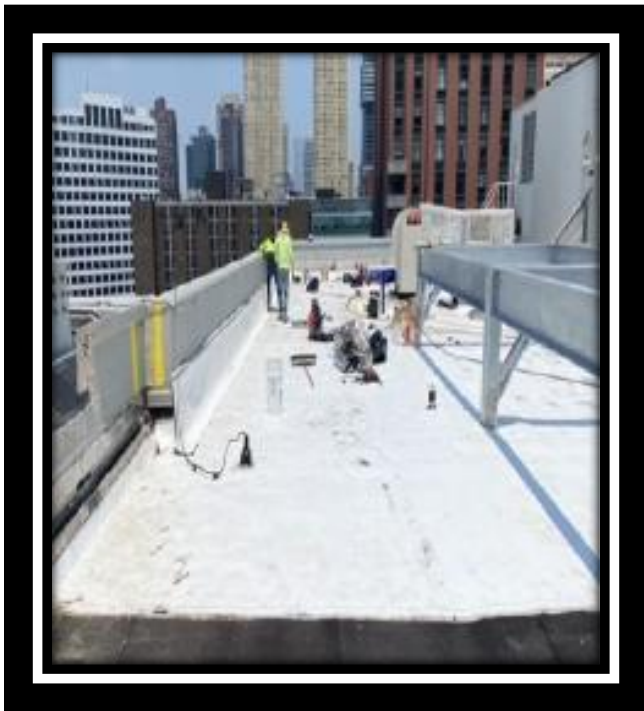


## Thor Equities

95 Greene Street  
Jersey City, NJ



# CCM Roofing Of Long Island Inc.



**CCM Roofing**  
Of Long Island Inc.

